

REVISIONS:

THE HOMELAND
PROJECT FOR SITE ISSUES COURSE
THE UNIVERSITY OF OKLAHOMA
DIVISION OF LANDSCAPE ARCHITECTURE



SCALE 1"=40'-0"



PREPARED BY:
ERIC SABIN
LA5343
FALL 2016
PROF. LOON

GRADING PLAN

L-1

PAGE
1 OF 2

The Special Place:

The visitor center of the park is my special space for this park. It is special because I designed it as the heart of the park. The center accommodates all activities and potential events that may occur in the future. The visitor center and its front plaza are accessible by vehicle, pedestrian, and bicycle. In other words, this is a final destination for all of the proposed trails and roads. For the front plaza, I designed a ground level fountain and seating areas. There is a drop-off for users' convenience and service access as well. The proposed visitor center is a place for learning and education. There are classes offered for children and adults. There is media center for watching movies, reading books, or listening music. One of the media center's focus is the history of Route 66 providing movies, books, and music about Route 66.



Above: Visitor Center Plan.

Below: Visitor Center Plaza.





Below: Perspective of the Visitor Center Plaza.

Interurban Park is a respite from the cars and driving that dominate so much of daily life for most Oklahomans. Once arriving at the park, visitors' have little interaction with cars. The road and parking are streamlined to limit intersections with pedestrian walkways. The active programming of the park is centered around a node rather than distributed throughout the park so visitors can easily walk to where they want, rather than feeling the need to drive from program to program.

The commercial development zone along the southern edge of the park with pedestrian access emphasis, means visitors linger in the park all day without needing to drive to get food etc. Many visitors walk and bike to the park, entering through the neighborhood access points and the new main entrance on Morgan Road with its convenient connection to the Oklahoma City Trails.



Master Plan, Interurban Park

The Special Place:

Interurban Park's iconic new feature, The Wiley Post Field and Winnie Mae Wing, is directly west of the Main entrance. The multi use space honors Wiley Post and his solo flight around the world. The round field circled by arches notes each stop Post made on his flight. The tallest flight arch will reach 55 feet high, catching the attention of visitors from all around especially the highly trafficked Kilpatrick Turnpike to the north. The walk around the field is a 10th of a mile for walkers who count, and features a seat wall for resting.

South of the field is the Winnie Mae Wing, a building with the park office, restrooms, and an atrium featuring rotating exhibits with historic information about migration, travel, and transportation in Oklahoma. The second floor is a rentable event space complete with kitchen and a balcony overlooking Lake Overholser.

The field and building are tied together by an elevated walkway. The walkway loops

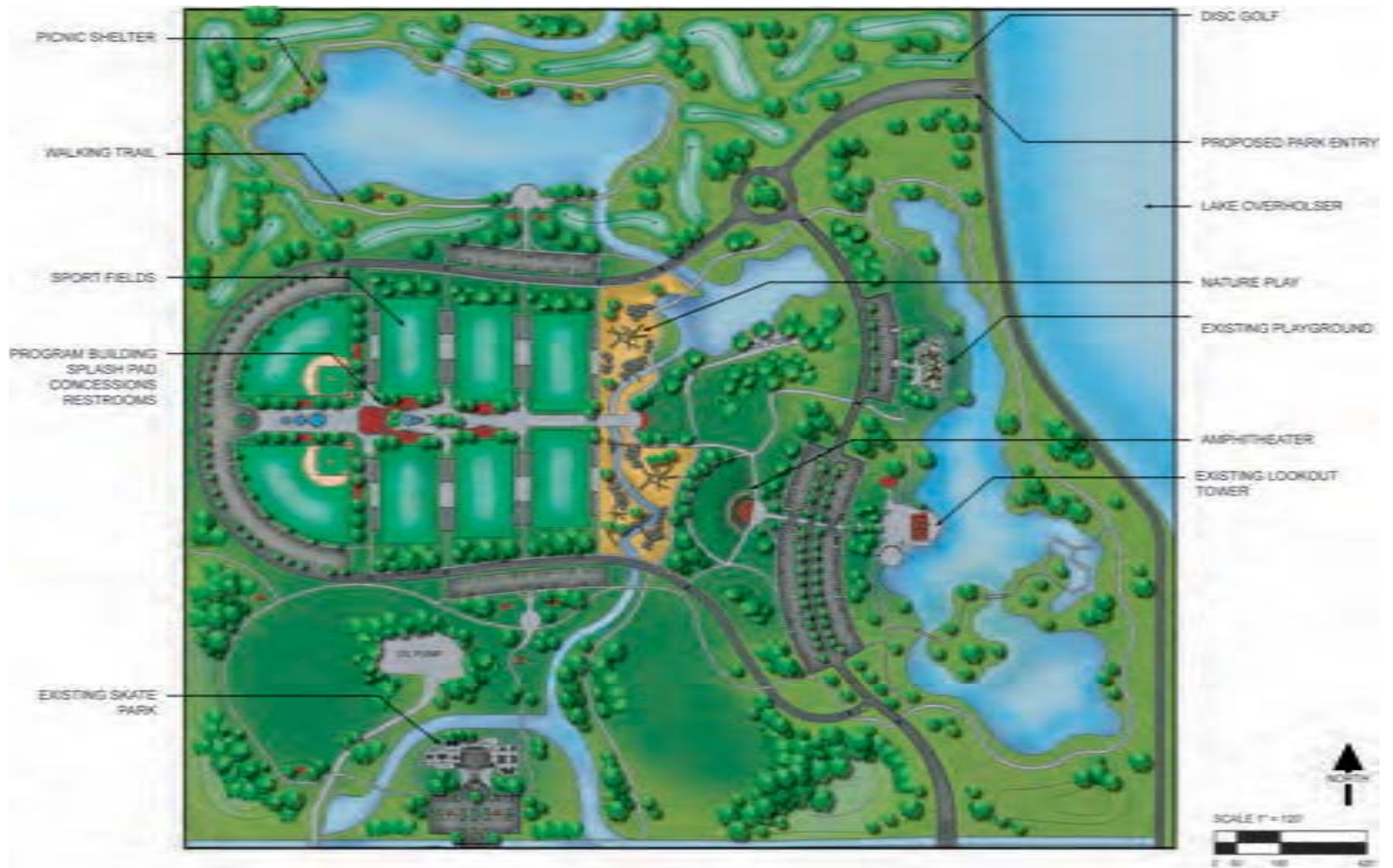
around from the north side of the field and carries visitors up to the roof of the Winnie Mae Wing. From this outlook visitors can look across to the lake and have a full view of Interurban Park.



Above: The Balcony and Entry Plaza of Winnie Mae Wing, Wiley Post Field in Distance

Below: Interurban Park's Iconic Building and Sculpture



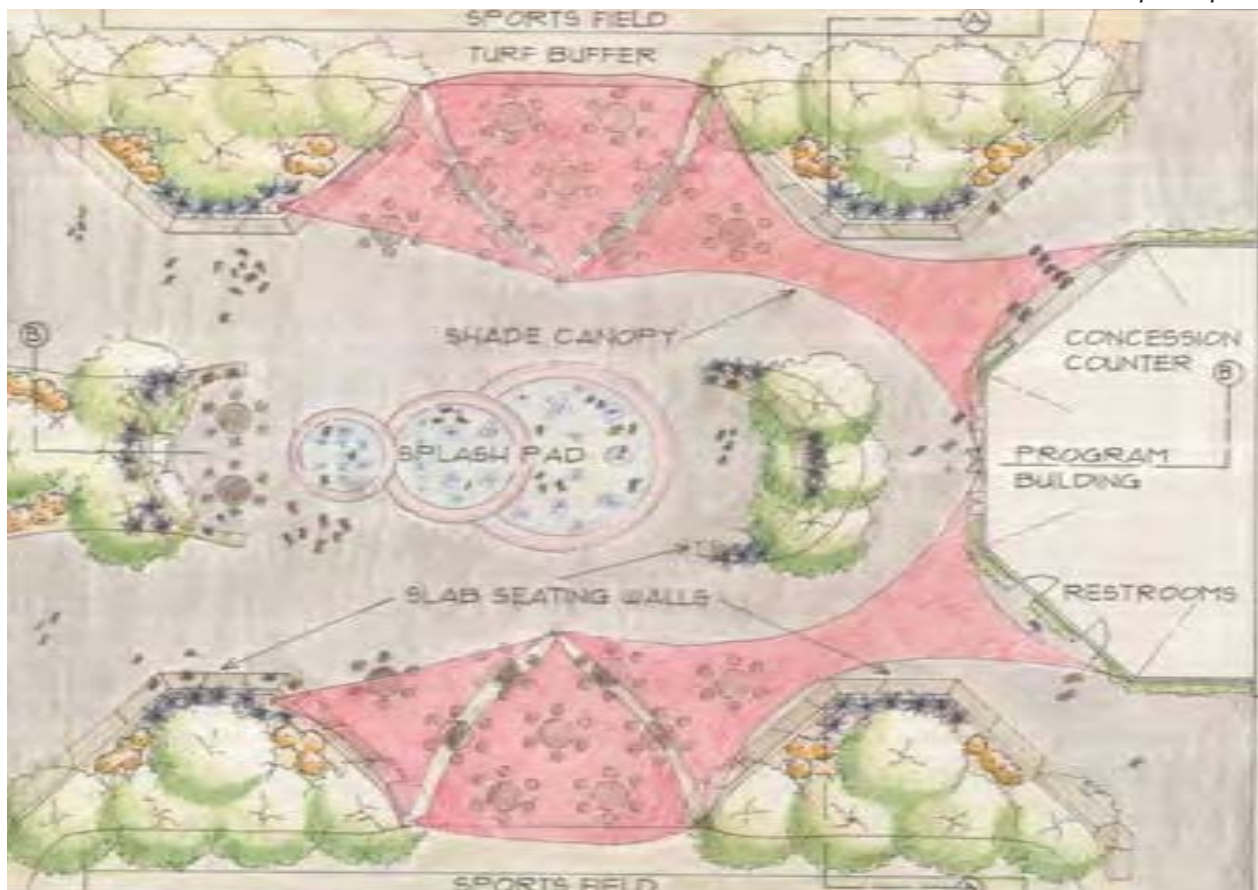


Route 66 Master Plan with natural separation and path interconnection

The Special Place:

The hub of the whole park in my mind is the program building and accompanying splash pad situated amongst the playing fields, the nature play and the pedestrian corridor at the center of the park. I can see this area full of people on the weekends attending the little league games being played on the surrounding sports fields. I can see many generations of families coming to this park for many years to come. This park will be a place where memories are made. When considering the continued growth of Oklahoma City and the proposed elements and programs in my park plan I have no doubt that this park will only get better with time.

Below: Plan view of the program building and splash pad





Above: Program building with facilities such as a concession stand and restrooms

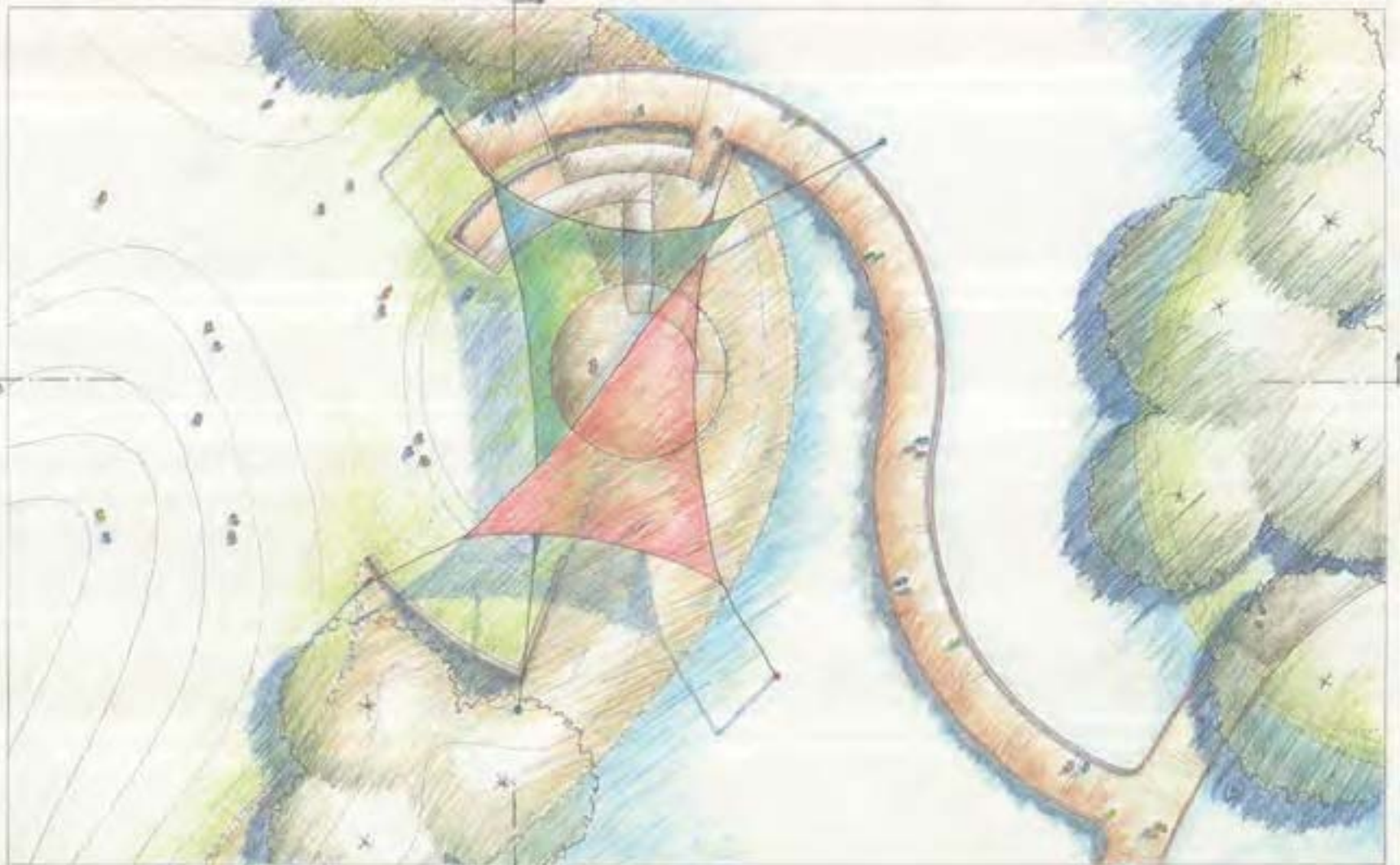
Below: Splash pad with slab rock seating walls and picnic tables covered by artistic shade sails





ROUTE 66 PARK

UNIVERSITY OF OKLAHOMA | DIVISION OF LANDSCAPE ARCHITECTURE
GARRETT SLEZAK | LA5515 | PRPF. WILLIAMS | 11/03/2015



Section 9: *The Destination for the Unique Experience*

Mahsa Yari



Elevated seating area adjacent to the Special Place.

historic Route 66 was about 3 miles north of the park and the name of the park itself is Route 66, the rocks establish a stronger connection between the name of the park and the actual Route 66.

Further, the BMX provides an exceptional view of Lake Overholser and is expected to attract a lot users because of this unique experience.

Overall, even though all program elements can be used to generate revenue for the park, renting out bikes at the park as well as the decks around the pond are expected to bring in the most revenue.

Gathering Area with eight rocks to represent the eight states through which Route 66 crossed.



Rentable deck at pond area is the perfect venue for hosting parties.



Walking along the nature trail creates the feeling of being in an enclosed woodland.

Special Place:

The selected area for a detailed plan is the area including the concession stand, the shade sails and the seating areas on either side of it.

To the southeast of this spot is the stage and the gathering area, to the southwest is fitness zone, to the northwest is the natural playground, and to the northeast is the picnic area.

The placement of the concessions stand is strategic in the sense that it has an open view

to the above mentioned programs, specially the center—the gathering area. Therefore, the users of those programs can easily access the concessions stand and use the seating areas conveniently and enjoy the shade under the shade sails. In addition, the grassy mounds located between the concessions stand and the center, is practical in its function and placement because it can be used by kids to play on and the presence of mounds also break the monotony of the view by adding green to the landscape.

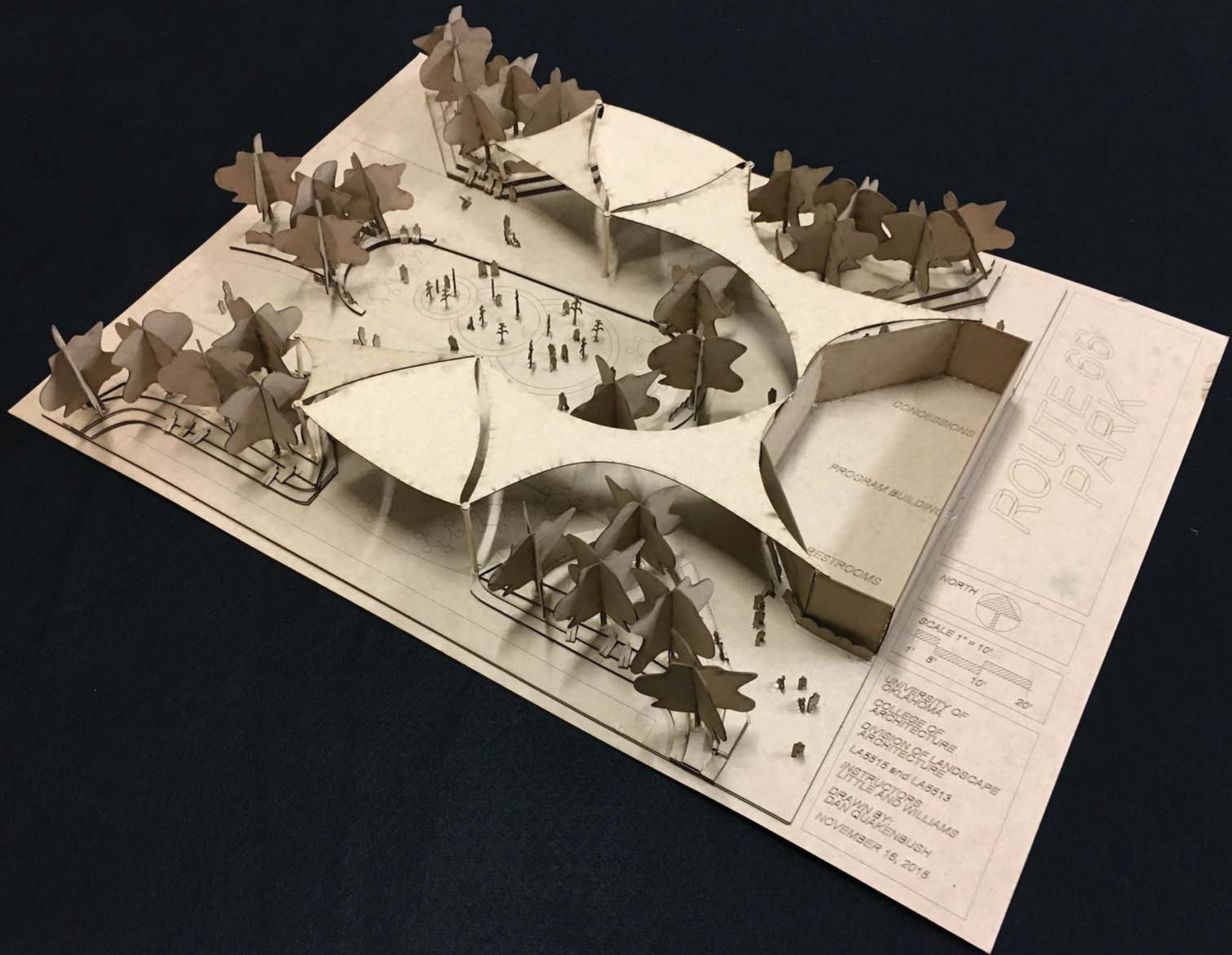


Above: Plan of concession stand

Below: Restroom facilities occur along the back wall of the concession stand.

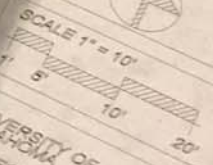
Playful grassy mounds break the monotony of the plaza and create an opportunity for people of all ages to play and relax.





ROUTE 66 PARK

NORTH

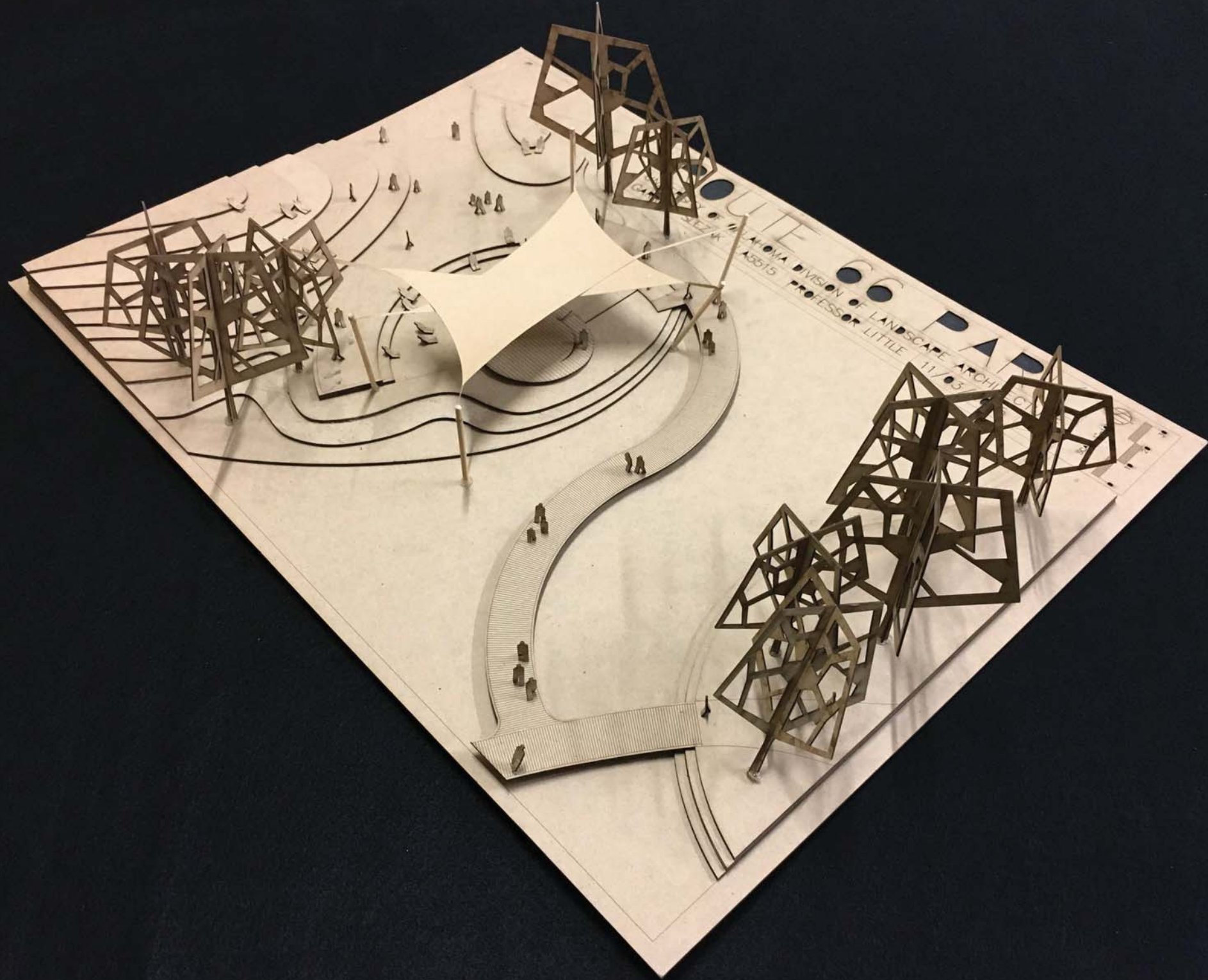


UNIVERSITY OF
OKLAHOMA
COLLEGE OF
ARCHITECTURE
DIVISION OF LANDSCAPE
ARCHITECTURE
LA5515 and LA5513
INSTRUCTORS
LITTLE AND WILLIAMS
DRAWN BY
DAN QUAKENBUSH
NOVEMBER 16, 2015

CONCESSIONS

PROGRAM BUILDING

RESTROOMS



oklahoma's
KOREAN WAR VETERANS
 monument park concept

JC Lerner | 05.11.17 | LA 5505 | Prof. Wall

"the noble sacrifices of heroes became
THE ETERNAL LIGHT
 that protects the republic of korea"



SANDAM • OBELISK

OUTDOOR OFFICE

MEMORIAL WALK • MOUNTAINS

TREES	Ac	<i>Acer saccharum 'Caddo'</i> Caddo Maple
	Up	<i>Ulmus parviflorus 'Golden Key'</i> Key's Golden Lacebark
	Ck	<i>Cornus kousa</i> Kousa Dogwood
	Ct	<i>Cornus amomum</i> sp. C. paniculata Sweet Autumn Clematis
VINE	As	<i>Anthriscus sylvestris</i> Cow Parsley
	Ag	<i>Allium stipitatum 'White Giant'</i> Giant White Allium
PERENNIAL	Op	<i>Ophiopogon planifolius</i> Black Mondo
	Fs	<i>Festuca spp.</i> Prairie Fescue Mix
GROUND COVER		

THE 3RD MCGEE

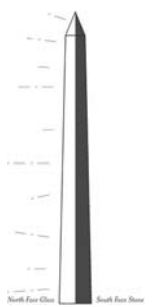
The benefits of reconnecting 3rd Street with Dean A McGee Avenue include:

- Freer Pedestrian Crossings
- Reduced Stops for vehicles on EK Gaylord
- Better connection to the Deep Diverse Neighborhood
- Joining two small green spaces into a single space
- Better connection to existing Broadway between 3rd & 4th



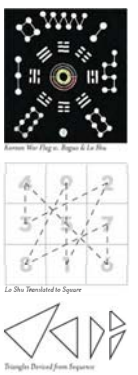
OBELISK OF LIGHT

The divided obelisk is built from stone on its southern half with hollow glass on the North. The obelisk both commemorates the progress made for South Korea, while also acknowledging the loss of North Korea. The light glowing from within the glass represents the US Forces who fought for Korean freedom.



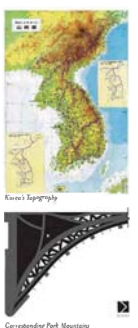
THE MAGIC TRIANGLES

The triangle shapes used throughout the park are based off of the Korean flag. The flag is a square of white with a red and blue trigram in the center. The triangles are placed in a square so that each vertex is a number. When placed in a square so that each vertex is a number, the triangles are placed in a square so that each vertex is a number.



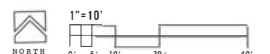
THE MOUNTAINS

The mountains of the Korean peninsula run along the top where a joint the land mass, and along the right side. With Broadway removed, the park now becomes a peninsula. Mountains along the top and right side of the park buffer it from the adjacent buildings and the heavy traffic on EK Gaylord.



FOOD TRUCK or BUS PARKING

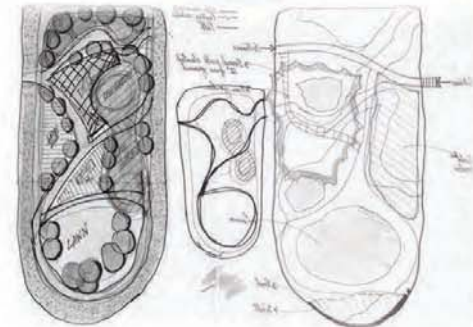
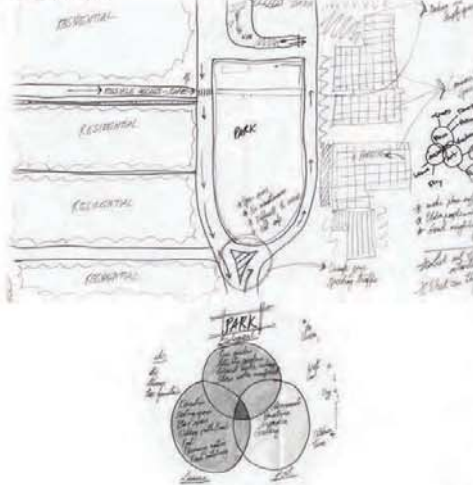
DEAN A MCGEE AVENUE / 3RD STREET



Winans Park
Area - 2.0 acres(approx.)



Site analysis



WINANS PARK



Entrance from NW 21st ST



Deck



Rain garden



Pollinator garden



Play area



Aerial view 1



Aerial view 2



Looking north from N Broadway Ave

Winans Park
Design

LA Studio 2

Instructor:
Brent Wall

Goutam Vella

University
of
Oklahoma

Dt: 04-28-17

EUFALA WETLAND PARK



SECTION SCALE 1/32"=1'